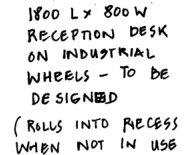


New 2.0 m wide opening in the office wall for the reception. Height and details by structural engineer – if possible as high as possible. New security roller on the inside of the office

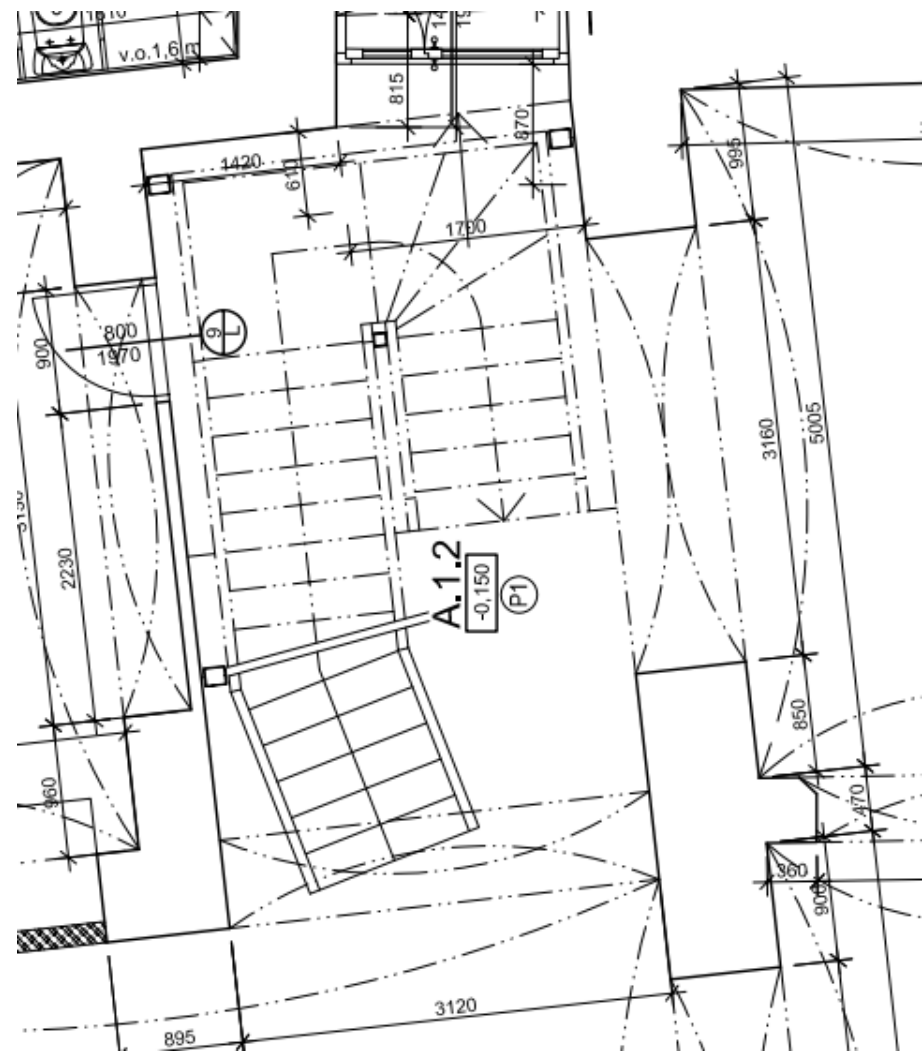
New 1.8 m wide reception desk on industrial wheels that can roll back into the recess when not in use

Existing 2.9 m high opening – demolish wall and door and construct new glazed screen to provide light and also provide security to the entrance to the café.



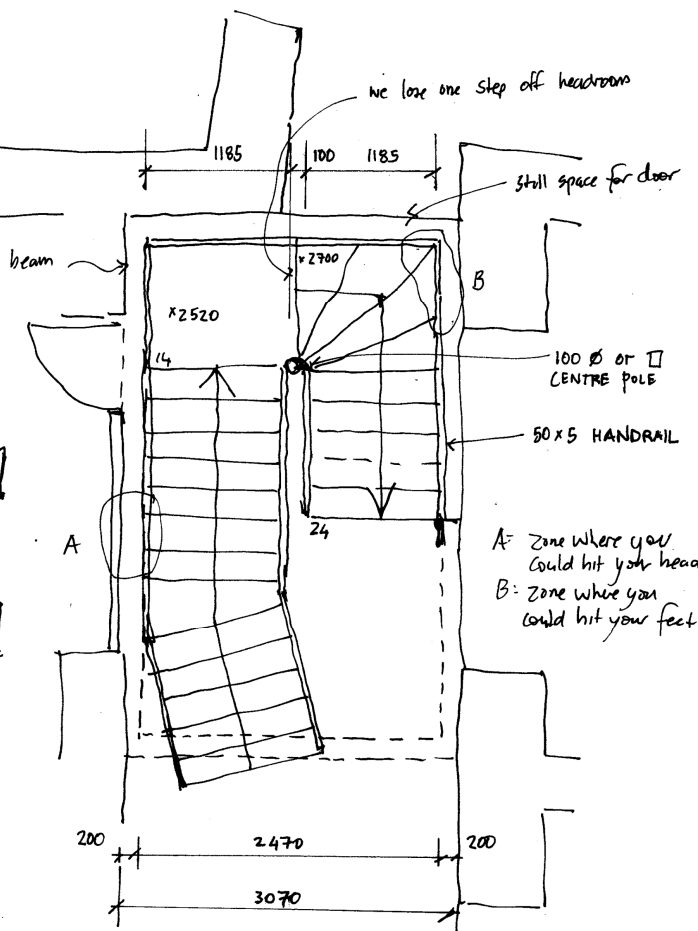
A.1.3 MICHAEL WHITE  
RECEPTION OFFICE  
NEW GLAZED SCREEN  
LOVOŠ STAGE 2  
3. 8. 2018

Lovos – Stairs



The stairs look like they work as drawn on the left with clearances underneath. Need to check on site.

Drawing on the right are the comments to the Projektant in Aug 2017



Current stair width reduced to  
Vs.  
1130 gross 1250 net  
1160 gross 1100 net at areas where 400x200 beam intrudes  
1185 gross 1100 net at all times

Lovos – Examples

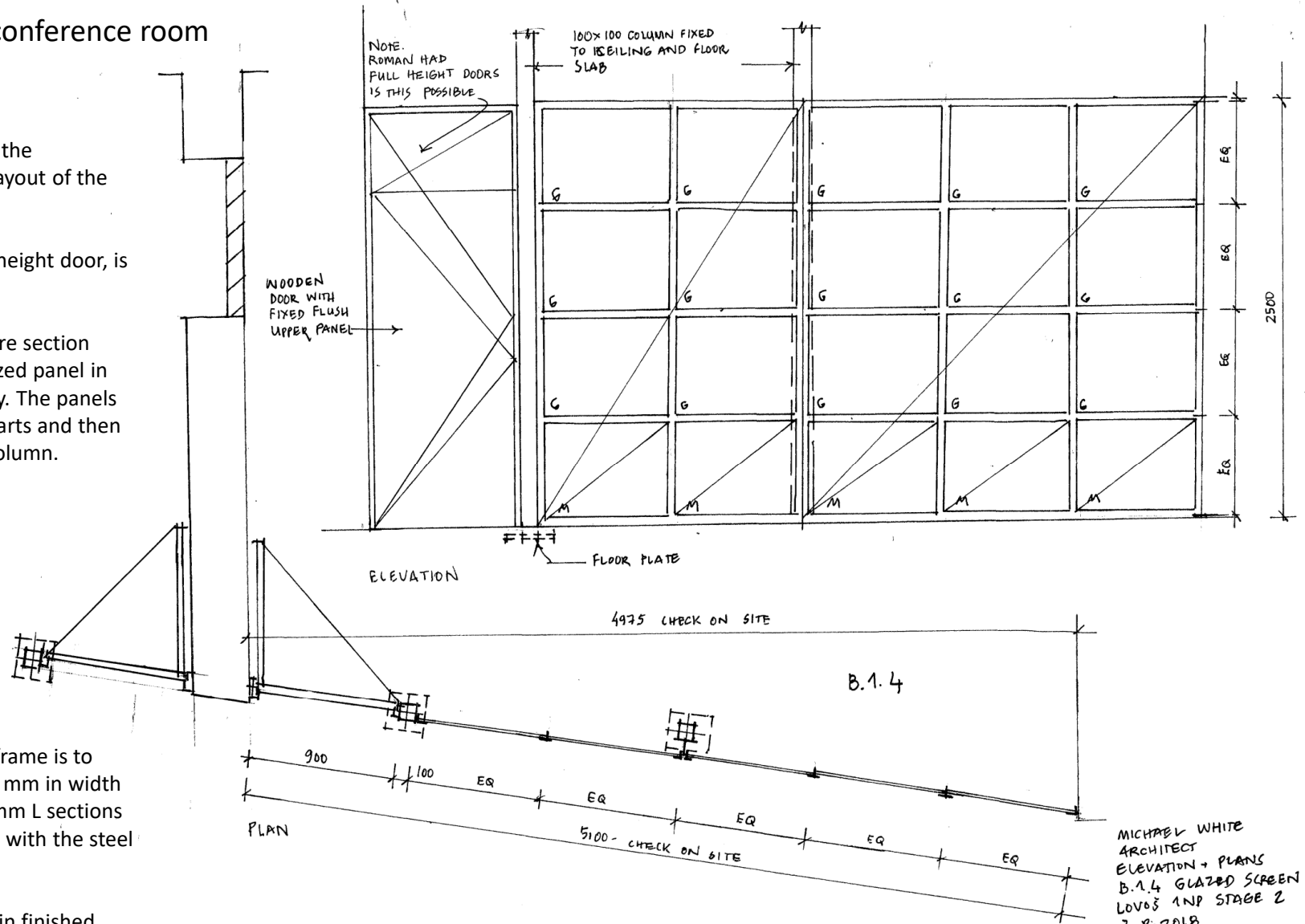


## Lovos – Startup space/ conference room

Note, heights are the same as the Projektant's drawing but the layout of the glazed panels is changed.

The Projektant also had a full height door, is this possible.

Please note the 100x100 square section column that is fixed to the glazed panel in mid section to provide stability. The panels could be constructed in two parts and then joined at the location of the column.



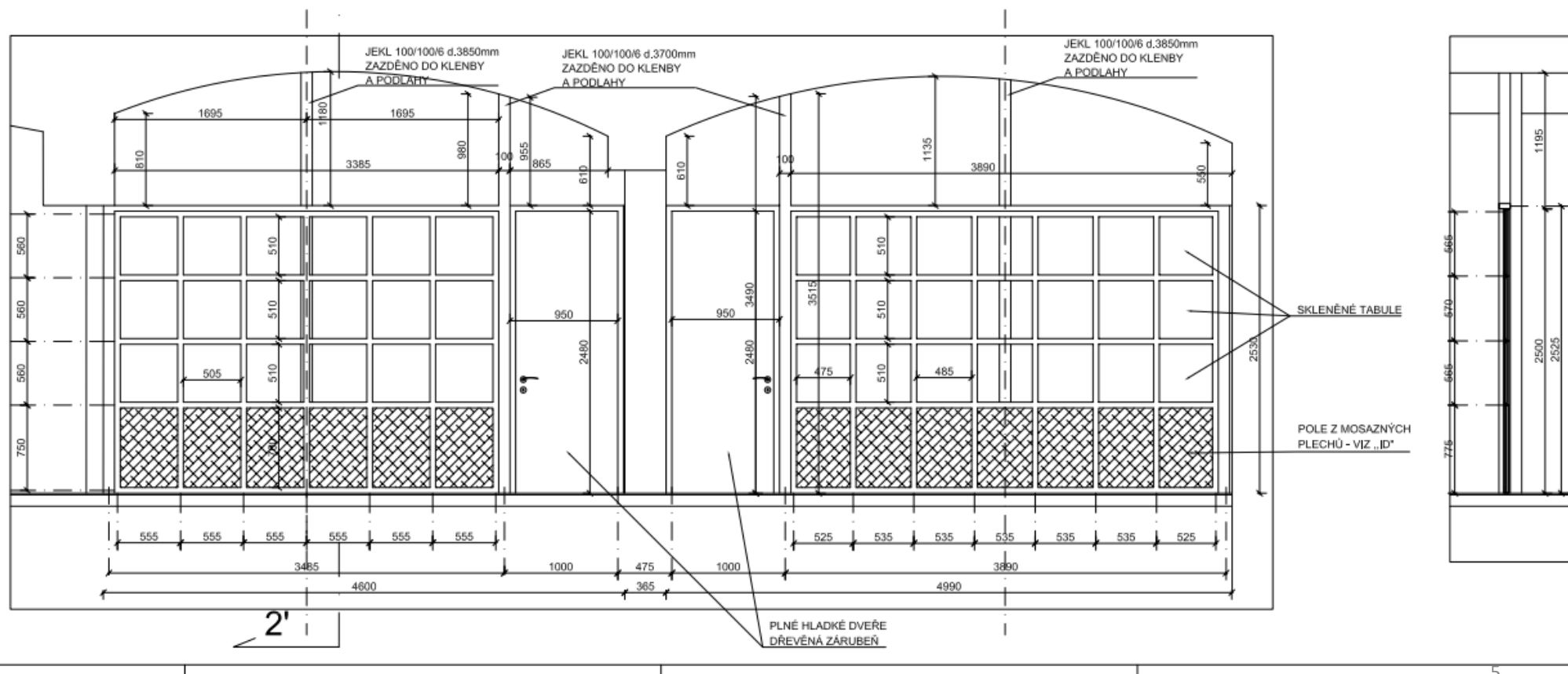
The original size of the metal frame is to provide a flat section of 50-60 mm in width which can be made of 2 x 25 mm L sections or a T section. To be discussed with the steel fabricator.

Lower section is steel plate pain finished.

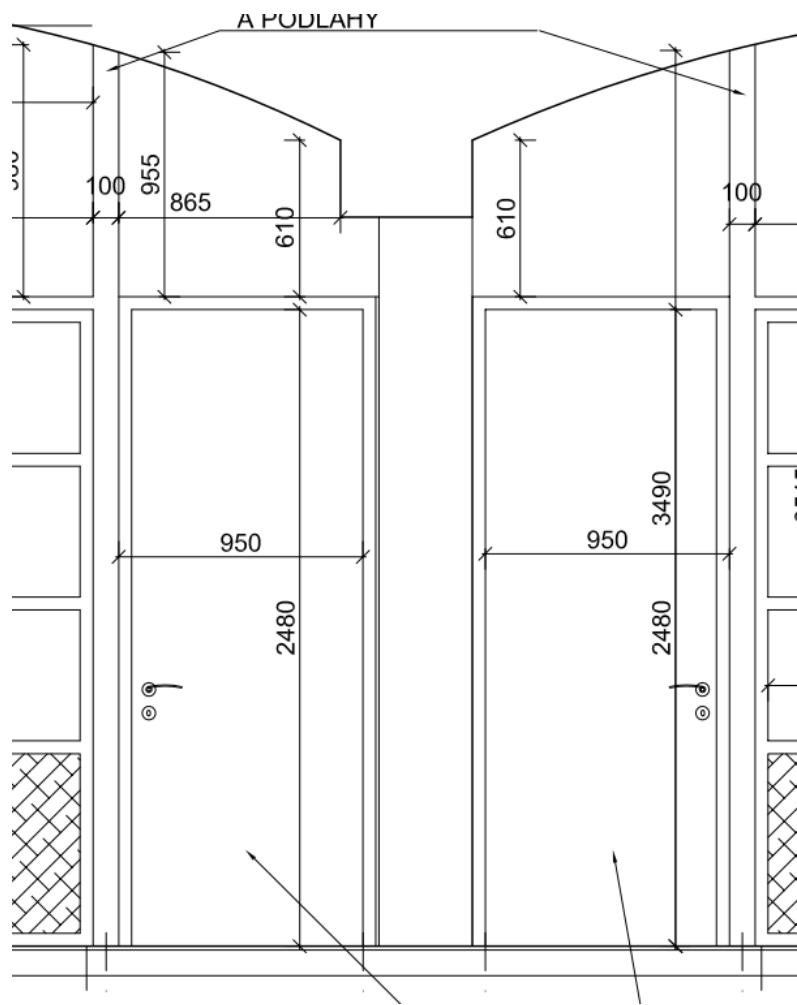
MICHAEL WHITE  
ARCHITECT  
ELEVATION + PLANS  
B.1.4 GLAZED SCREEN  
LOVOS 1NP STAGE 2  
3.8.2018

## Lovos – Projektant drawings 2017

The Projektant had wider door openings (950 mm). These are reduced to 900 mm. The height is similar but the Projektant also had a 25 mm top profile. The spacing of the square glazing and metal panels has been changed



Lovos – Projektant drawings 2017

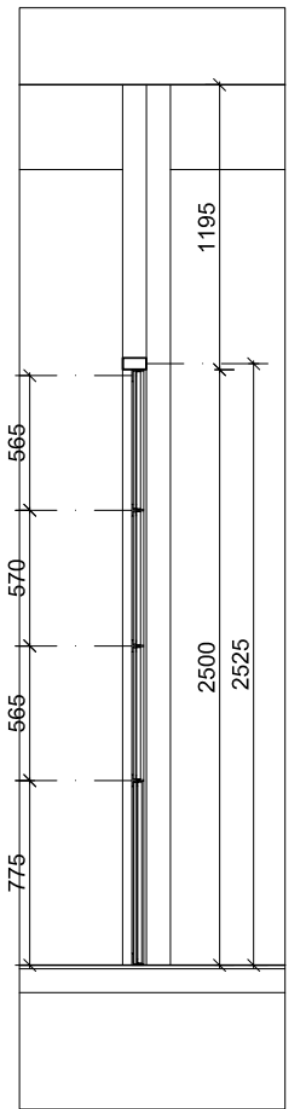


The Projektant had wider door openings (950 mm). These are reduced to 900 mm. The height is similar but the Projektant also had a 25 mm top profile.

The spacing of the square glazing and metal panels has been changed

TABULE

SAZNÝCH  
'IZ „ID"



[illegible]

Please note the 100x100 square section column that is fixed to the glazed panel in mid section to provide stability. The panels could be constructed in two parts and then joined at the location of the column.

G: TOUGHENED GLASS  
M: METAL PANELS  
ALL STEEL WORK PAINT  
FINISHED - COLOUR (MONIKA)

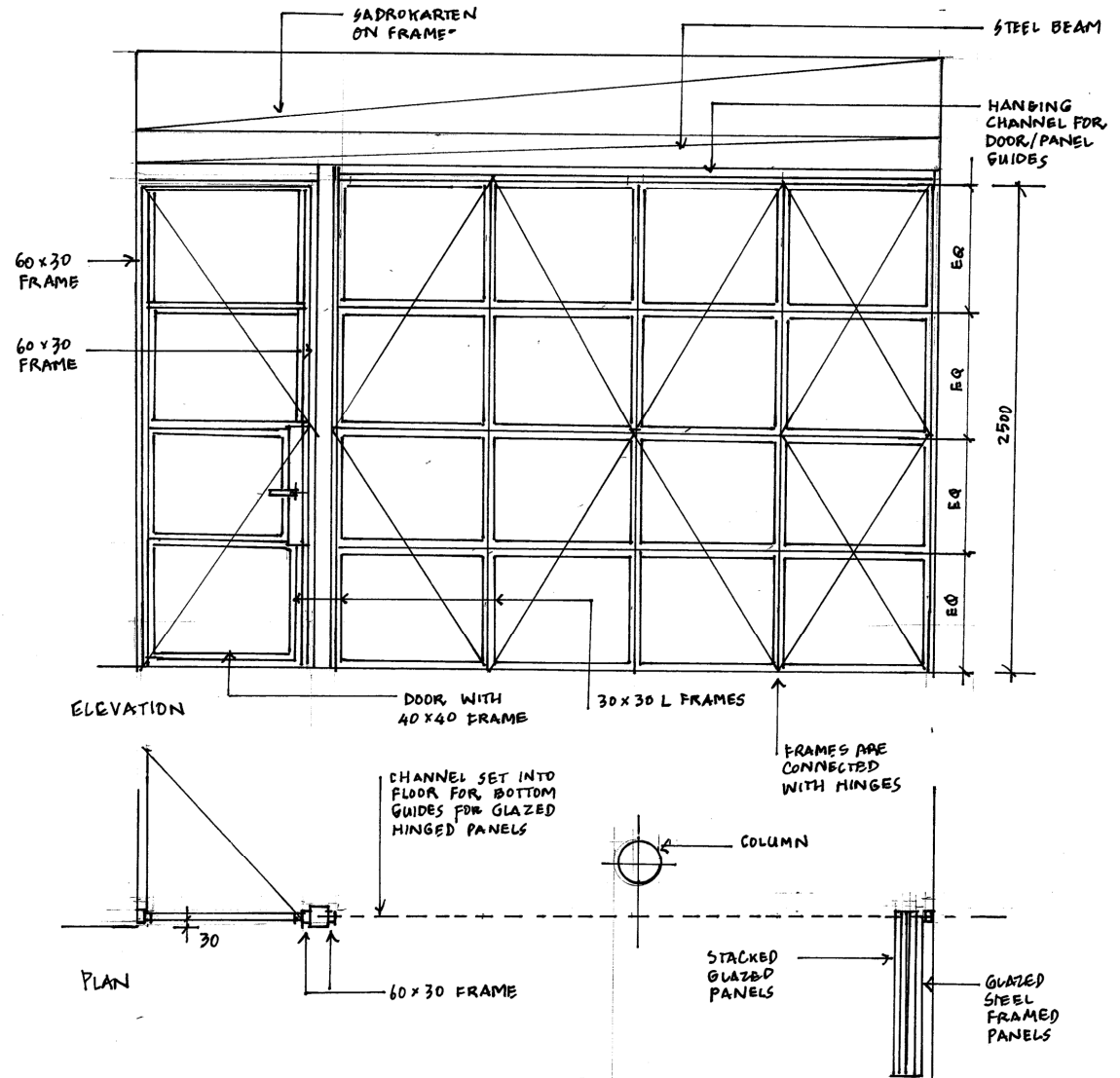
MICHAEL WHITE ARCHITECT  
B.1.5 GLAZED SCREEN  
ELEVATION + PLANS  
LOVOŠ 1NP STAGE 2  
3.8.2018



## Lovos – Salon – sliding glazed screen

New glazed screen in front of the column. New beam in front of the column to support the hanging rail for the glazed panels. Beam fixed into the walls and also supported by a 100 mm square steel column next to the fixed door.

Ventilation pipe will be located in front of the Sadrokarten wall above the steel beam.

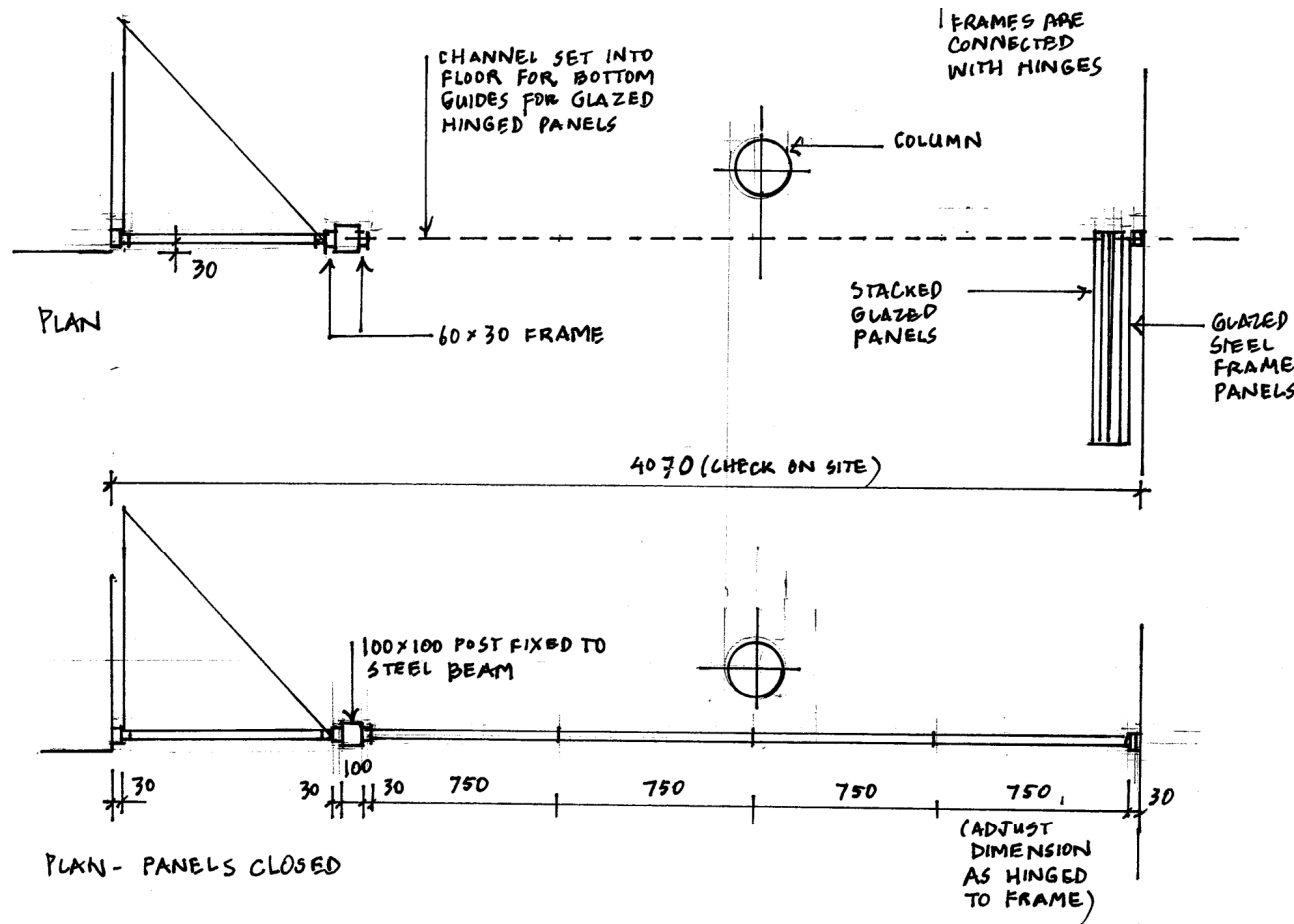
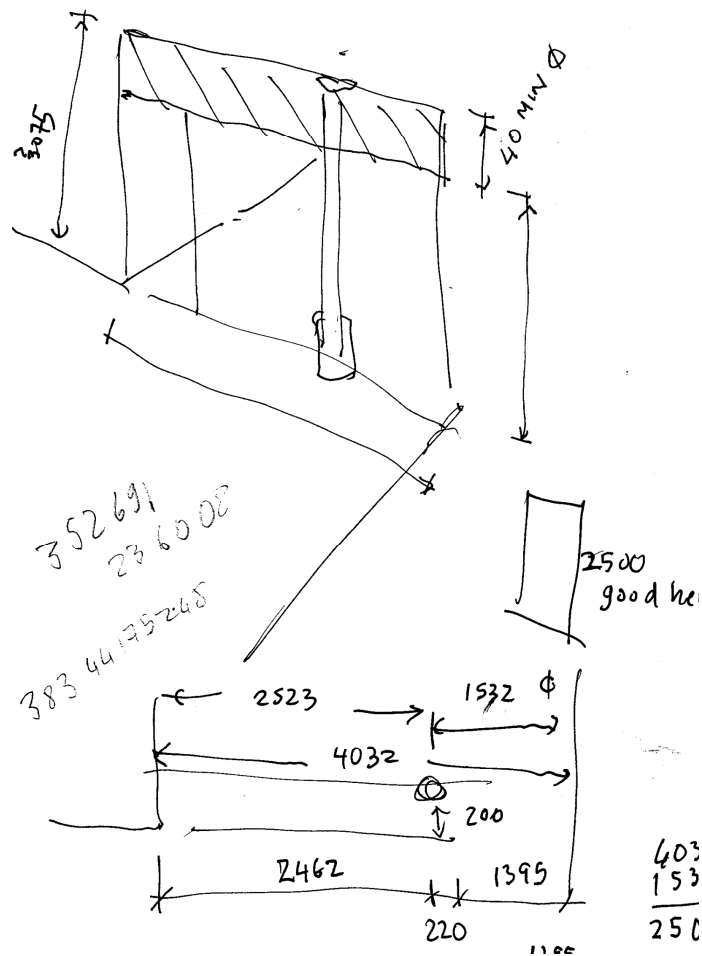




Lovos – Salon – wall and column details



Lovos – Salon – plan



MICHAEL WHITE  
ELEVATION + PLANS  
GLAZED PANEL 1NP  
LOVOS STAGE 2  
3. 8. 2018